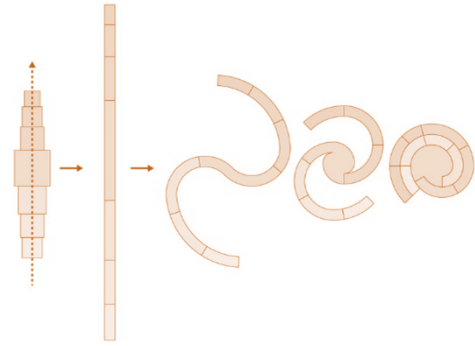


DD
TEMPLE DESIGN
CENTRAL ARK
KALANI GROUP

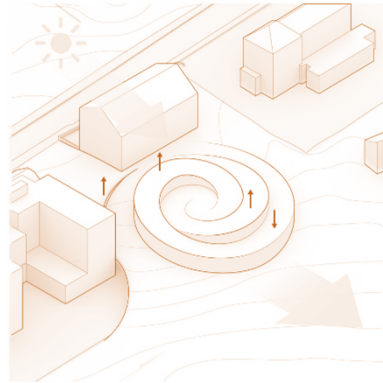


The temple campus is stretched into a liner continuous spiral experience



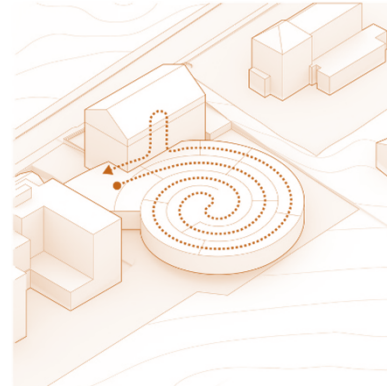
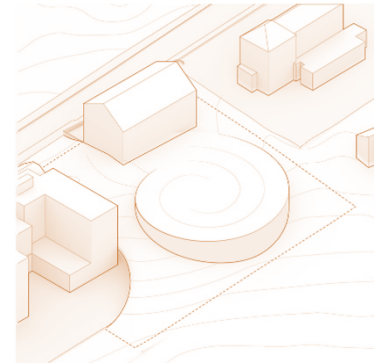
LIGHT AND VIEWS

the spiral space is lifted and suppressed to allow light and views



CONNECTING LANDSCAPE

a landscape carpet is draped over site



CONNECTING ROUTE

a continuous route connects the spiral space with buildings



Inspiration

Pattern and motif



CONCENTRIC LINES

By taking out concentric pattern from traditional architecture carvings to create various pattern which further used as temple form and details

Inspiration

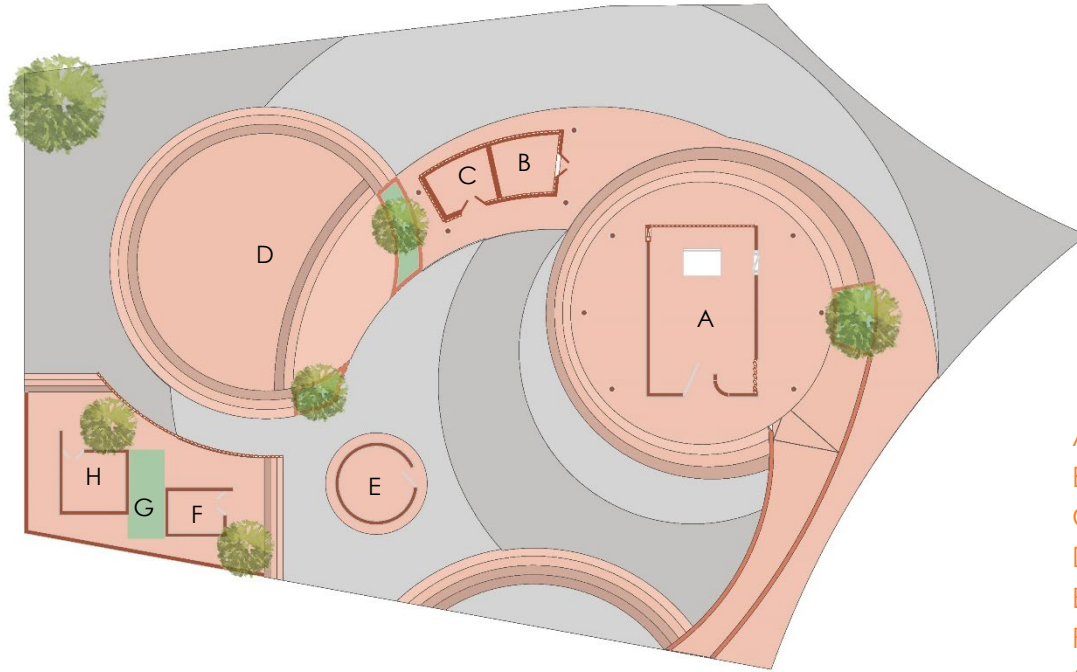
Pattern and motif



PATTERN/MOTIF

Derived from
traditional jain
architecture ,more
in a monolithic style

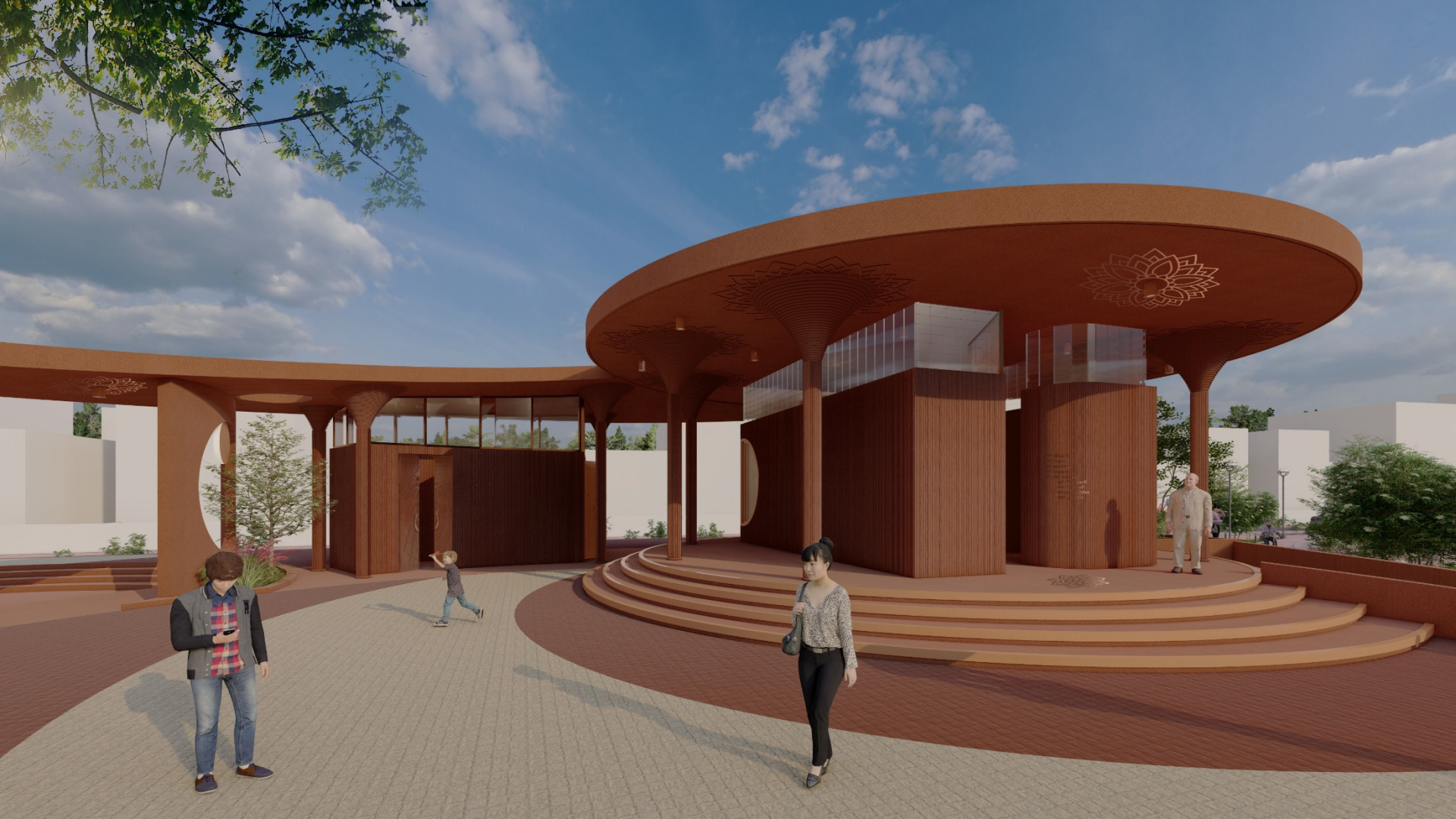




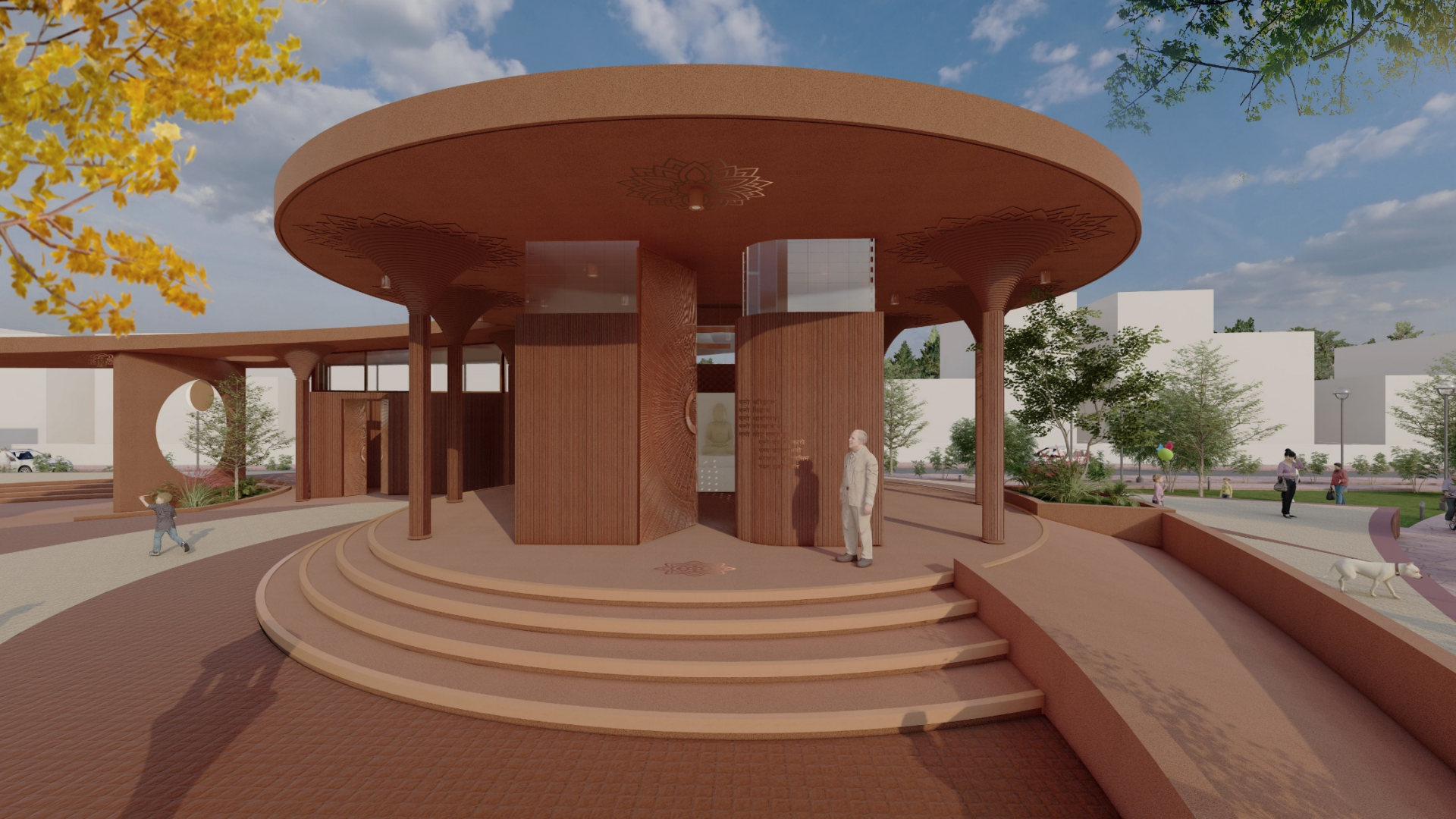
- A. Temple
- B. Drivya room
- C. Jinvani room
- D. Amphitheater / Swadhaya space
- E. Sant niwas
- F. Store
- G. Wash
- H. Toilets



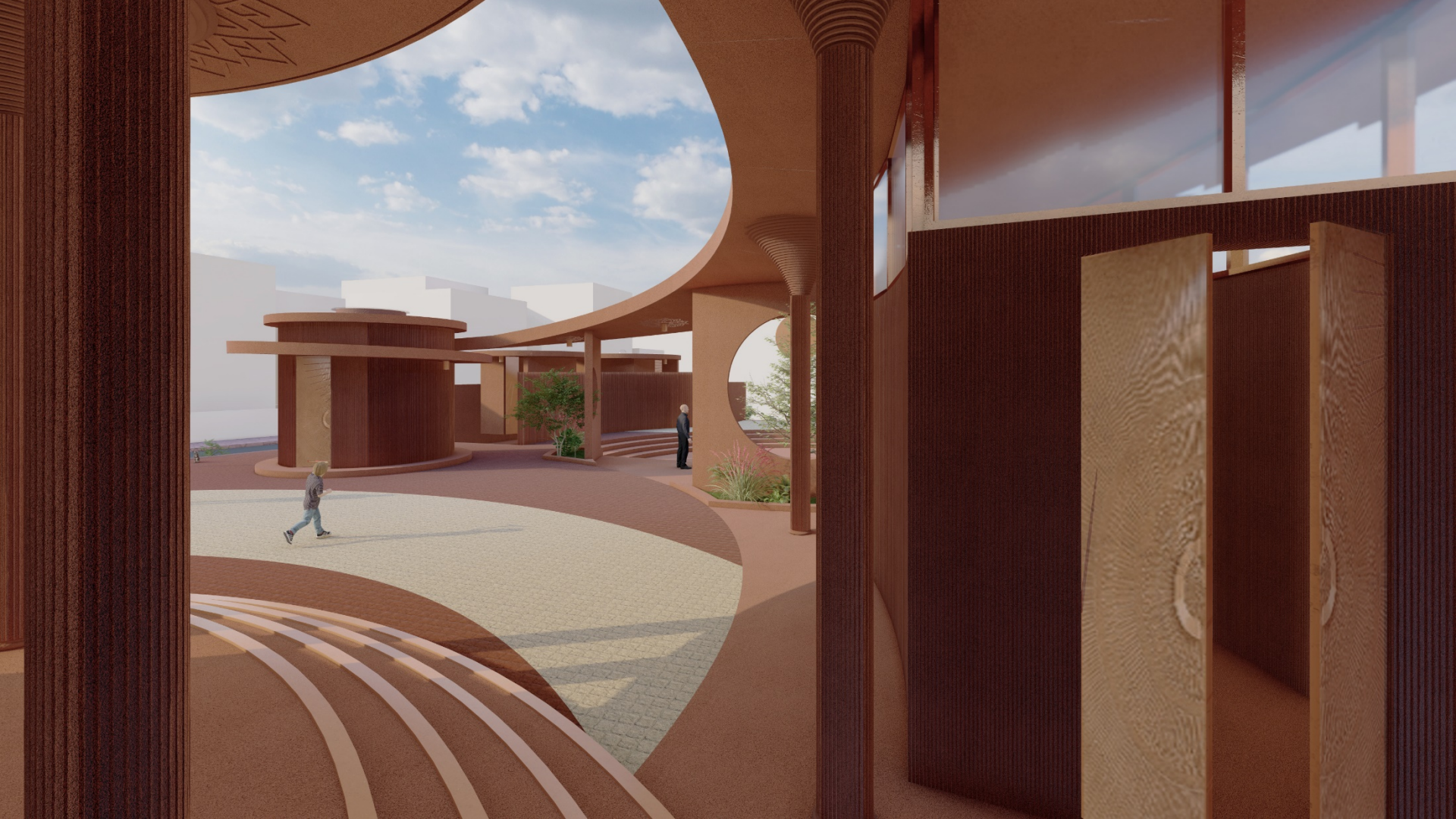
























COLUMN DETAIL

Derived from
inspired pattern ,
Fluted and spiral
groves concrete
column





WALLS & FLOOR

copper inlays of pattern & motifs, 'Namo Mantra' ,inspired from Jainism architecture

FORM